

Seasonal rainfall situation (% Departure from normal) in India (June 1-August 05, 2012)

S. No	Meteorological Sub Division	(June - Sep) Normal	01-07 Jun 2012	01-28 Jun 2012	01. Jun - 05.Jul 2012	01. Jun - 12.Jul 2012	01. Jun - 19.Jul 2012	01. Jun - 26.Jul 2012	01. Jun - 02.Aug 2012	01. Jun - 03.Aug 2012	01. Jun - 04.Aug 2012	01. Jun - 05.Aug 2012	* Jun 01 – Aug 05 2012	
													ACT (mm)	NOR (mm)
1	And & Nic Islands	1683	8	5	-2	5	7	-3	-9	-10	-11	-12	795.5	899.3
2	Arunachal Pradesh	1768	54	12	2	-5	-2	-4	9	9	9	10	1191.5	1087.2
3	Assam & Meghalaya	1793	47	21	3	5	13	8	4	4	2	2	1146.9	1124.9
4	Nag, Mani, Miz, Trip	1497	53	-2	-14	-22	-23	-20	-21	-20	-20	-20	715.4	889.2
5	S.W.Bengal & Sikkim	2006	1	34	16	17	31	23	14	14	13	13	1331.3	1178.7
6	Gangetic W.Bengal	1168	-82	-37	-44	-37	-27	-27	-24	-25	-26	-25	477.7	636.1
7	Orissa	1150	-87	-17	-12	-15	-19	-14	-13	-11	-8	-5	582.1	609.9
8	Jharkhand	1092	-93	-18	-41	-31	-25	-19	-17	-13	-12	-11	525.1	591.2
9	Bihar	1028	-14	-38	-52	-38	-16	-15	-23	-19	-19	-18	460.6	561.5
10	East Uttar Pradesh	898	-94	-72	-78	-32	-32	-12	-17	-11	-6	-6	424.3	453.2
11	West Uttar Pradesh	769	-82	-88	-90	-58	-58	-48	-33	-33	-30	-31	262.5	377.9
12	Uttarakhand	1229	-61	-69	-41	-31	-38	-31	-28	-27	-17	-13	586.4	676.2
13	Harya, Chand & Delhi	466	-43	-90	-93	-70	-70	-70	-71	-72	-72	-73	66.4	243.1
14	Punjab	492	-24	-74	-85	-70	-70	-66	-66	-66	-66	-66	90.3	265.2
15	Himachal Pradesh	825	-58	-68	-58	-41	-50	-47	-38	-36	-36	-36	292.1	455.8
16	Jammu & Kashmir	535	-9	-29	-32	-27	-30	-35	-30	-30	-25	-22	232.1	299.0
17	West Rajasthan	263	-19	-77	-85	-58	-58	-64	-67	-68	-68	-69	45.5	147.5
18	East Rajasthan	616	-88	-72	-67	-4	-24	-37	-37	-38	-40	-42	189.9	327.5
19	W. Madhya Pradesh	876	-90	-64	-50	-16	-31	-22	12	9	6	3	471.3	456.7
20	E. Madhya Pradesh	1051	-94	-48	-50	-15	-18	-6	-2	-2	-3	-2	540.6	551.0
21	Gujarat region	901	-98	-72	-69	-48	-49	-54	-57	-58	-58	-59	212.1	520.1
22	Saurashtra & Kutch	474	-100	-72	-68	-67	-73	-77	-80	-80	-80	-80	58.0	296.4
23	Konkan & Goa	2914	-48	-13	-3	-8	-7	-13	-14	-14	-14	-14	1686.3	1968.6
24	Madh. Maharashtra	729	-69	-52	-36	-37	-39	-37	-26	-25	-24	-24	322.0	426.1
25	Marathwada	683	-88	-59	-39	-35	-29	-28	-31	-32	-33	-34	238.7	360.8
26	Vidarbha	955	-90	-25	-31	-18	-20	-5	2	0	-1	0	540.3	539.6
27	Chhattisgarh	1147	-90	-17	-25	-18	-17	-7	-4	-3	3	5	658.7	628.0
28	C. Andhra Pradesh	581	-96	-18	-19	-9	6	4	2	3	8	9	313.2	286.8
29	Telangana	755	-51	-10	-10	-7	-3	9	8	8	10	10	452.0	411.0
30	Rayalaseema	398	-75	-48	-43	-32	10	2	-1	-1	-1	-2	173.5	176.9
31	T.Nadu&Pondicherry	317	-83	-55	-44	-36	-2	-18	-26	-27	-29	-29	88.3	124.3
32	Coastal Karnataka	3084	-32	-12	-8	-14	-21	-22	-24	-24	-23	-22	1695.1	2184.3
33	North int. Karnataka	506	-77	-46	-44	-48	-38	-33	-34	-33	-33	-32	177.0	260.7
34	South int. Karnataka	660	-74	-51	-47	-53	-50	-45	-44	-44	-43	-42	226.6	389.6
35	Kerala	2040	-44	-31	-31	-31	-38	-39	-43	-43	-44	-44	822.5	1461.9
36	Lakshadweep	999	25	-1	-5	15	4	-6	-12	-13	-14	-14	559.7	653.4

Regional rainfall situation (June 1- August 5)

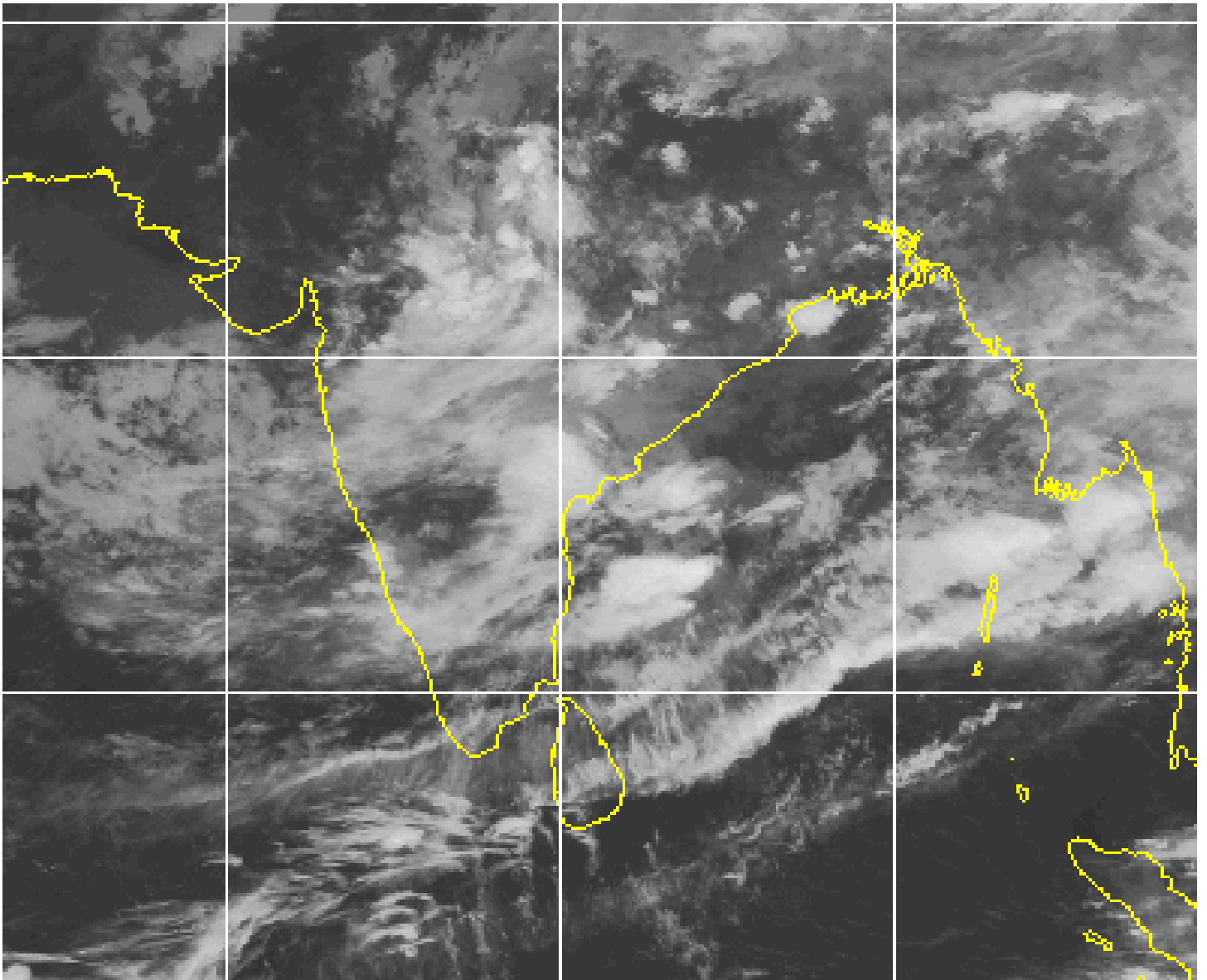
COUNTRY AS A WHOLE	-18
NORTH WEST INDIA	-31
CENTRAL INDIA	-14
SOUTH PENINSULA	-23
EAST & NORTH EAST INDIA	-11

LEGEND:

Excess: (+20 or more)	Blue
Normal:(+19 to -19)	Green
Deficient:(-20 to -59)	Pink
Scanty:(-60 to -99)	Yellow
No Rain:(-100)	White

- Heavy rains occurred in Orissa, Jharkhand, Madhya Pradesh, Uttarakhand and Jammu & Kashmir in the last 48 hours.
- Scattered rains in entire Karnataka helping the standing crops.
- North-west India remained completely dry.

*These bar diagrams have been prepared based on the data supplied by IMD.



<http://tropic.ssec.wisc.edu/real-time/indian/images/xxirmet5.GIF>